



Pelletteria - Cinture / Cortina



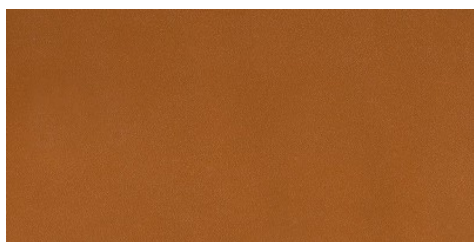
Conciatura completamente al vegetale, liscio, rifinitura semianilina

PELLAME
Groppone
Spalla

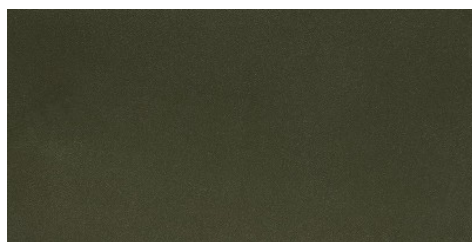
SPESSORE
1.0-4.0

APPLICAZIONI
Cinture
Pelletteria

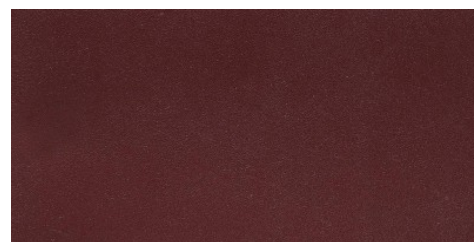
COLORI



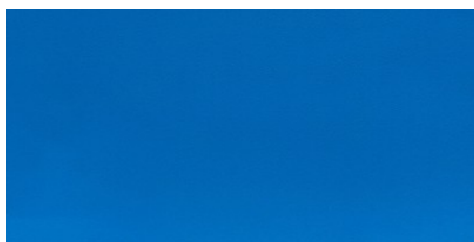
200



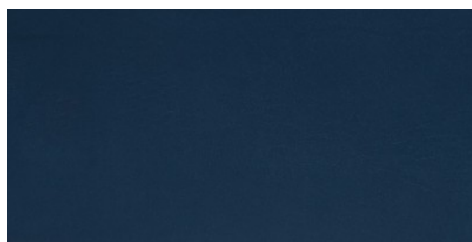
201



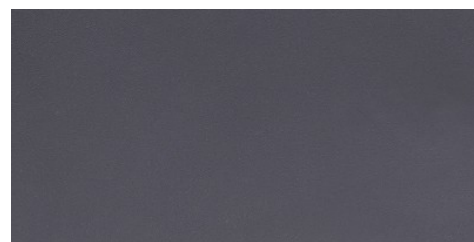
202



203



204



205

DISCLAIMER: I colori delle immagini di questo catalogo possono differire dalla resa su pelle. The colours of the images of this catalogue may differ from the way they appear on the leather.