



Cinture / Mirror



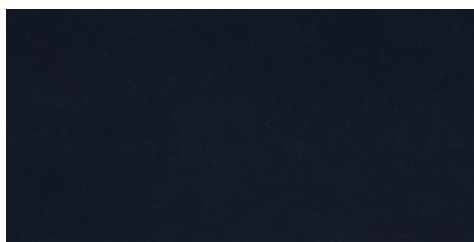
Conciatura al cromo, rifinitura abrasivata semilucida con vernicetta

PELLAME
Mezzo Groppone

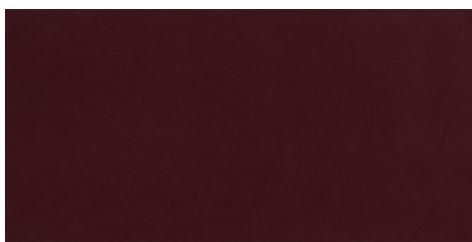
SPESSORE
1.8-2.0

APPLICAZIONI
Cinture

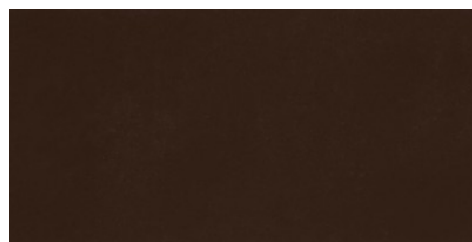
COLORI



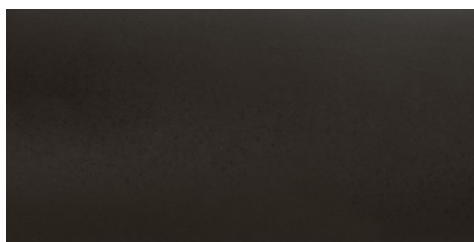
BLUE



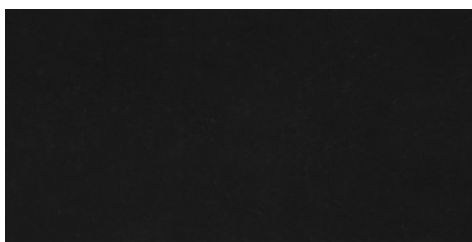
BORDEAUX



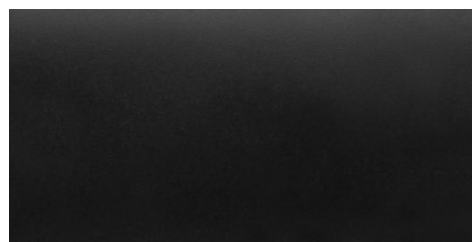
MOKA



MOKA OPACO

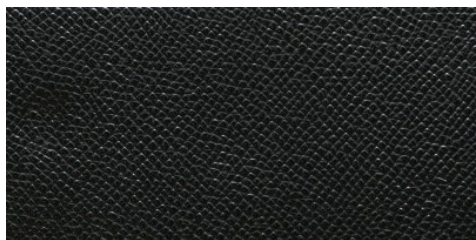


NERO

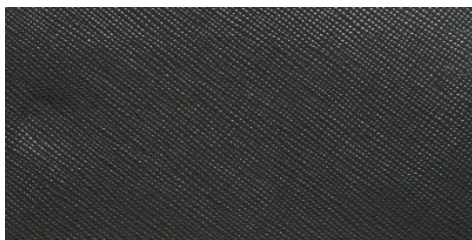


NERO OPACO

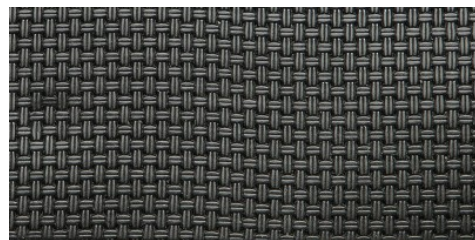
DISCLAIMER: I colori delle immagini di questo catalogo possono differire dalla resa su pelle. The colours of the images of this catalogue may differ from the way they appear on the leather.



101



102



103



104



105



106