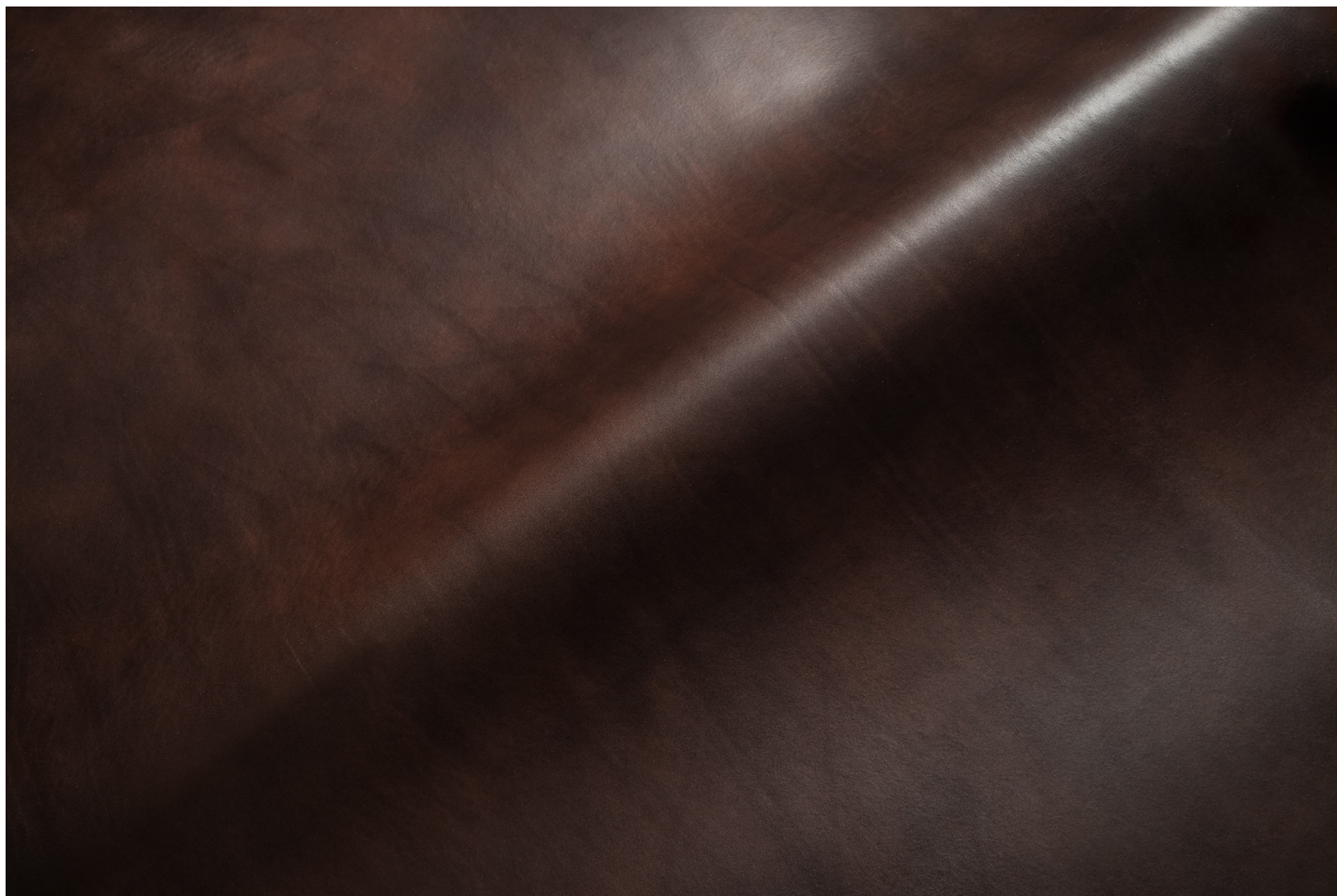




Pelletteria - Cinture / Divine



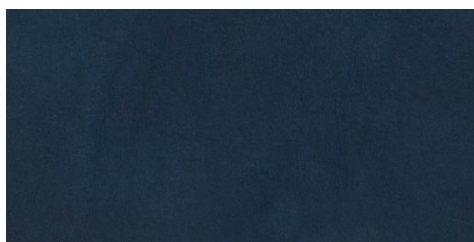
Conciatura completamente al vegetale, liscio, rifinitura tampone a mano

PELLAME
Groppone
Spalla

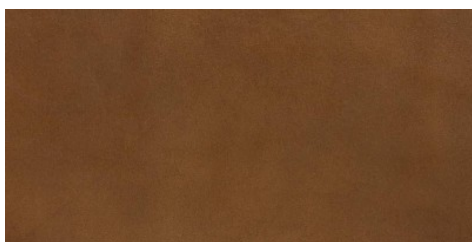
SPESSORE
1.0-4.0

APPLICAZIONI
Cinture
Pelletteria

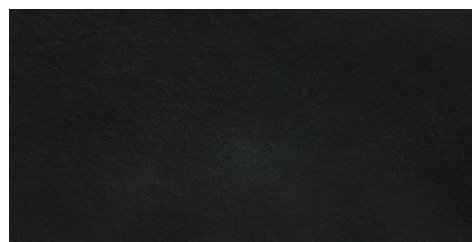
COLORI



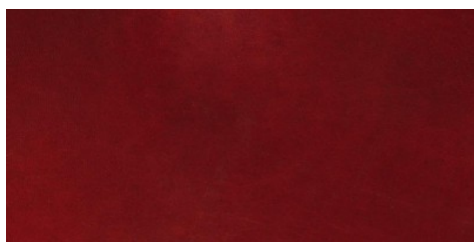
BLU



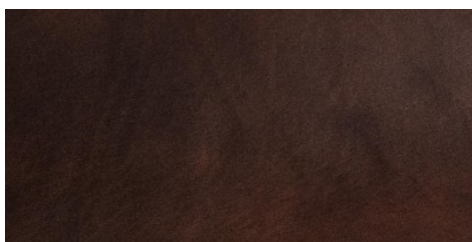
COGNAC



NERO



ROSSO



TESTA DI MORO

DISCLAIMER: I colori delle immagini di questo catalogo possono differire dalla resa su pelle. The colours of the images of this catalogue may differ from the way they appear on the leather.