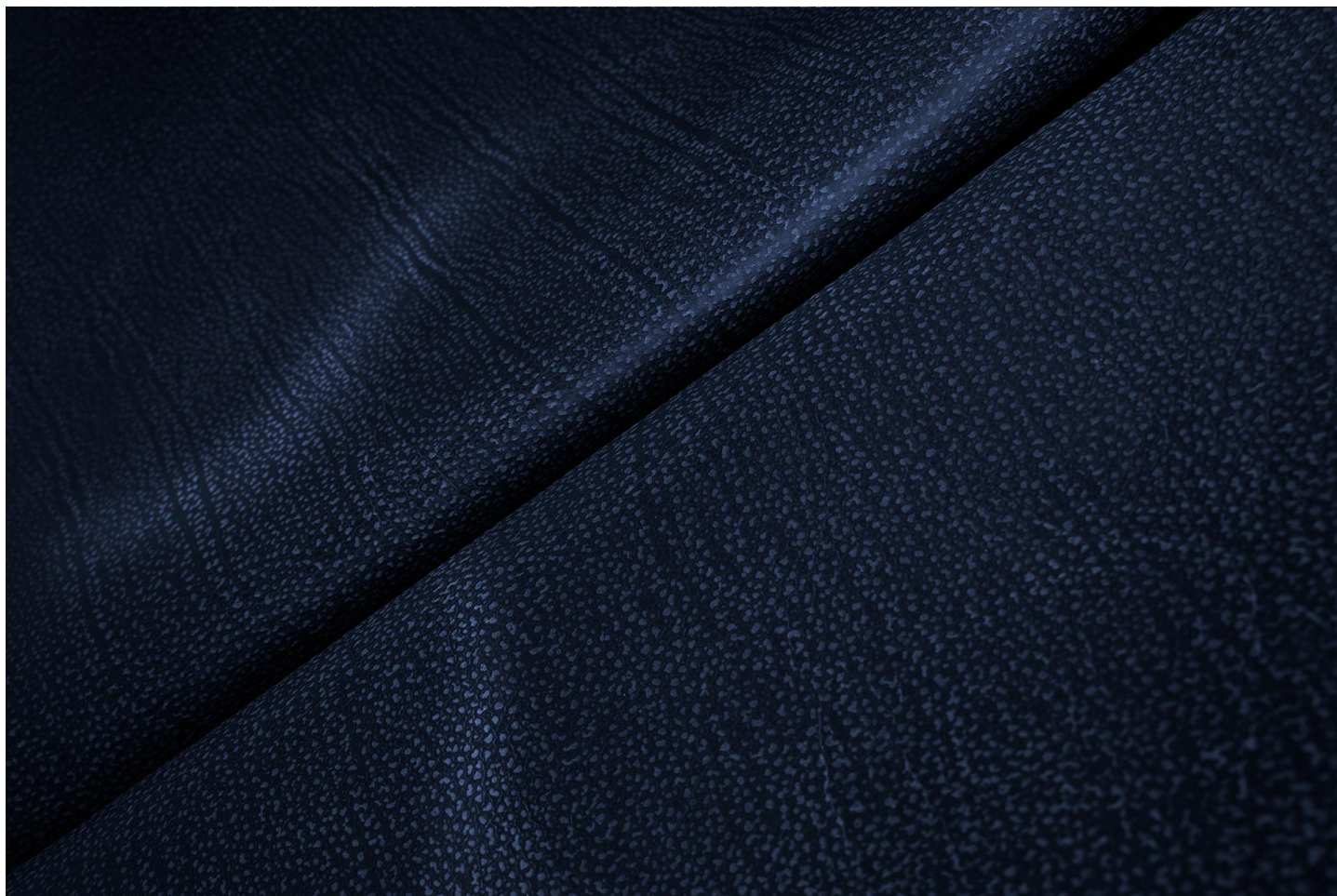




## Pelletteria - Cinture / Morphosis 105



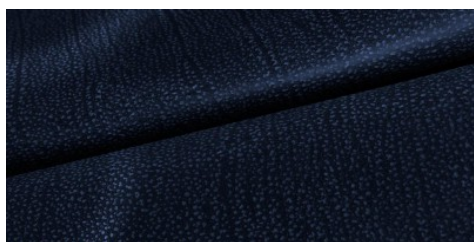
Conciatura completamente al vegetale, rifinitura con oli e cere

**PELLAME**  
Groppone  
Spalla

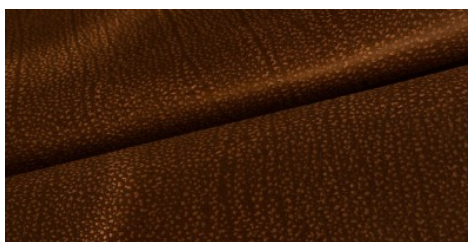
**SPESSORE**  
1.0-4.0

**APPLICAZIONI**  
Cinture  
Pelletteria

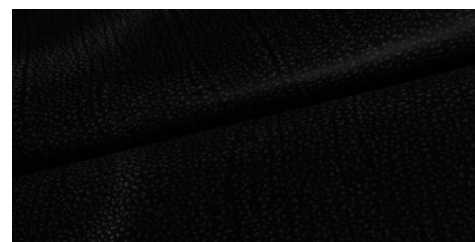
### COLORI



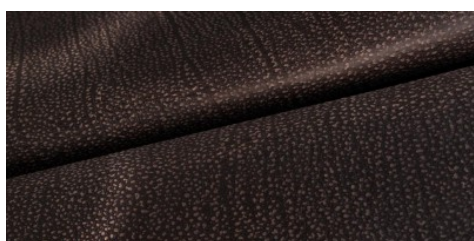
BLU



COGNAC



NERO



TESTA DI MORO

DISCLAIMER: I colori delle immagini di questo catalogo possono differire dalla resa su pelle. The colours of the images of this catalogue may differ from the way they appear on the leather.