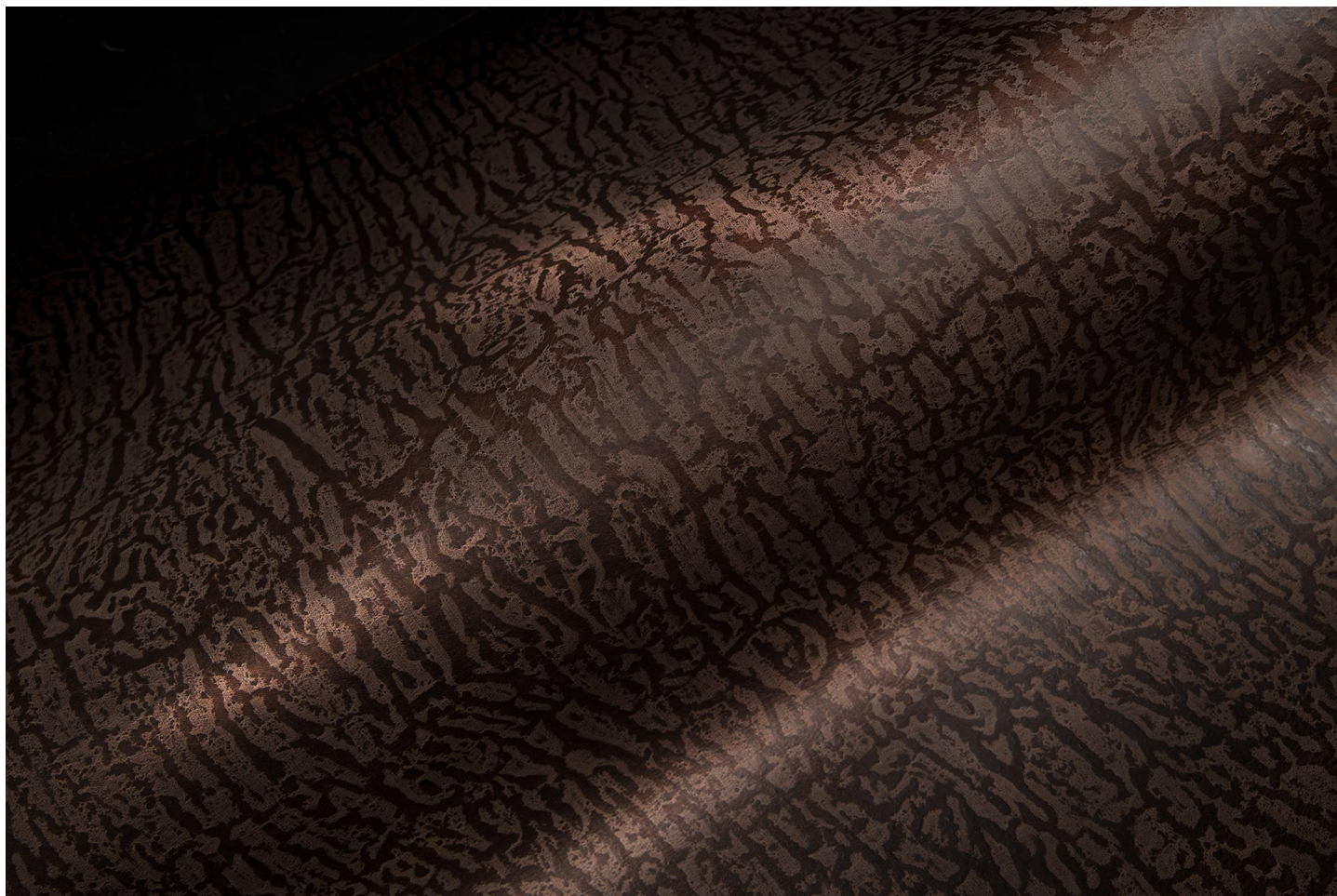




Pelletteria - Cinture / Morphosis 106

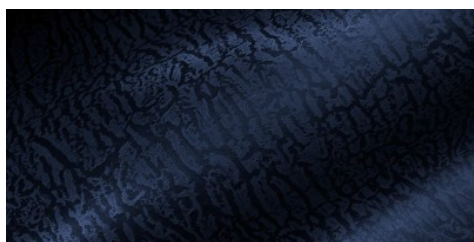


Conciatura completamente al vegetale, rifinitura con oli e cere

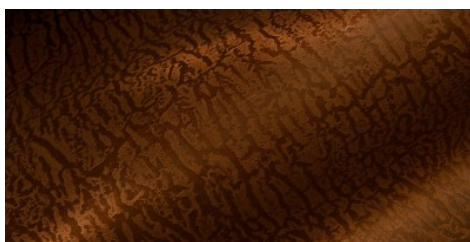
PELLAME
Groppone
Spalla

APPLICAZIONI
Cinture
Pelletteria

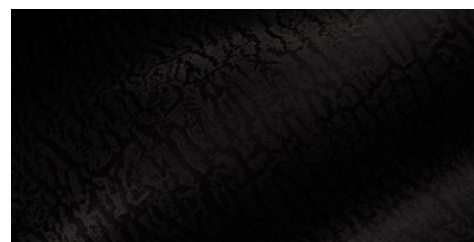
COLORI



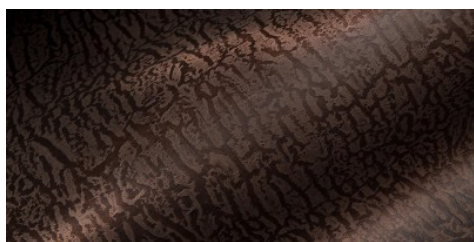
BLU



COGNAC



NERO



TESTA DI MORO

DISCLAIMER: I colori delle immagini di questo catalogo possono differire dalla resa su pelle. The colours of the images of this catalogue may differ from the way they appear on the leather.