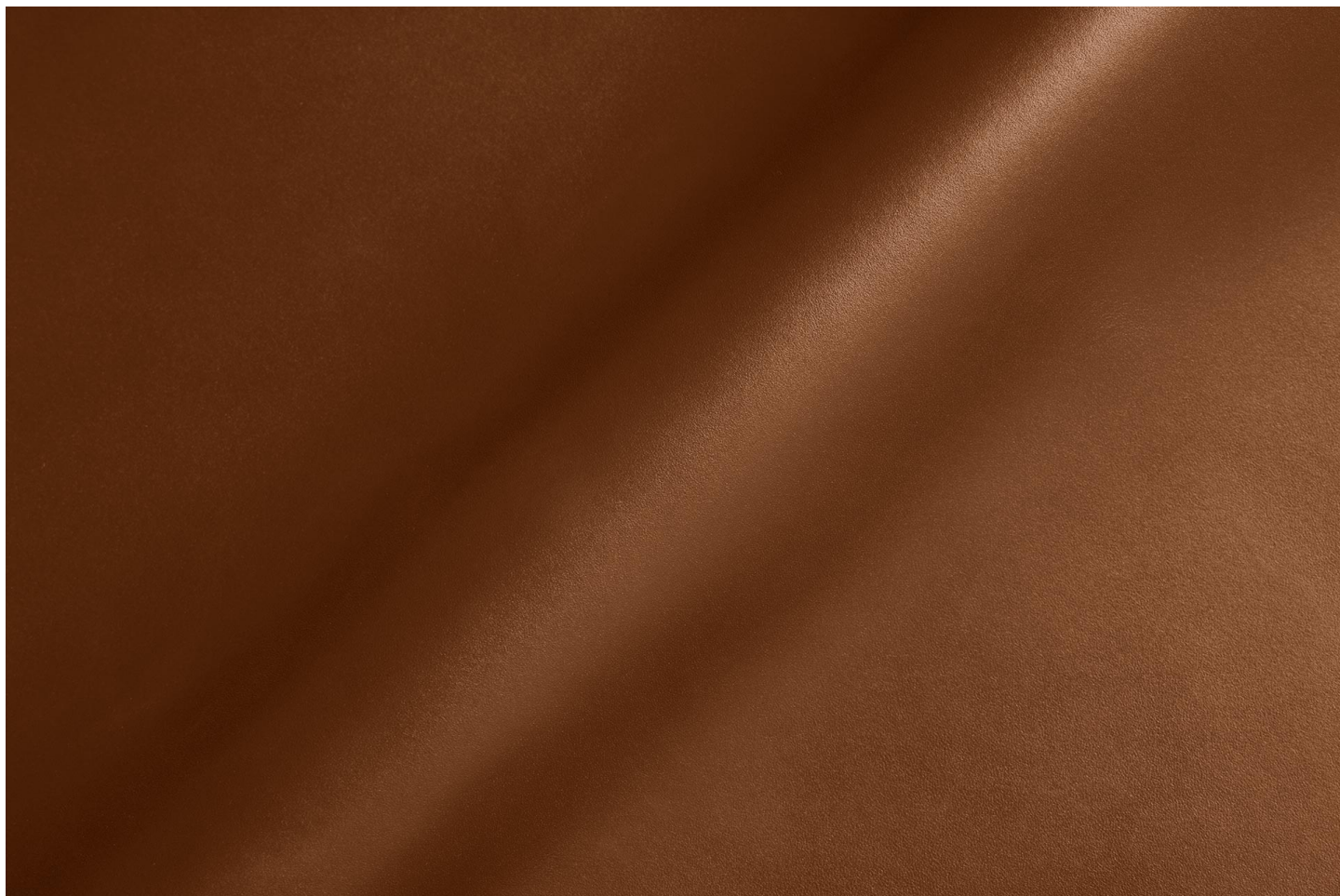




## Pelletteria - Calzatura / Siena Lux



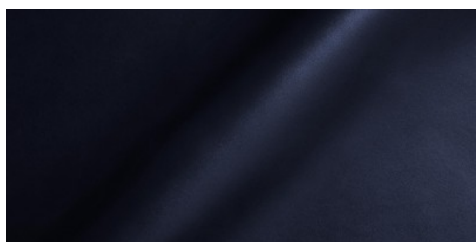
Conciatura completamente al vegetale, rifinitura con olio e anilina

**PELLAME**  
Mezzo Vitello

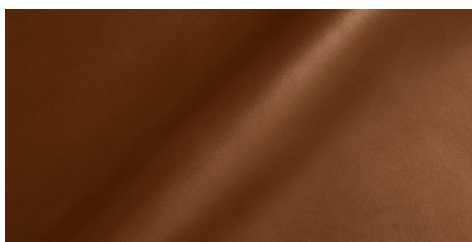
**SPESSORE**  
1.9-2.0

**APPLICAZIONI**  
Calzatura  
Pelletteria

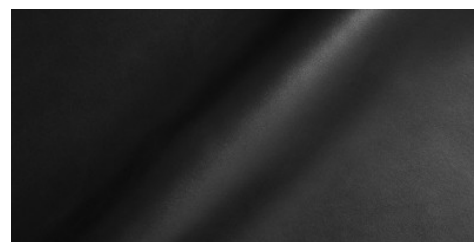
### COLORI



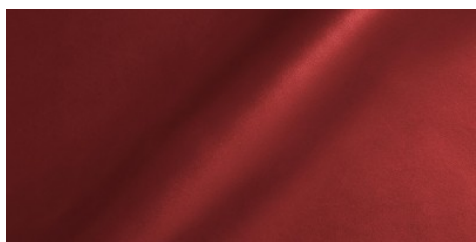
BLU



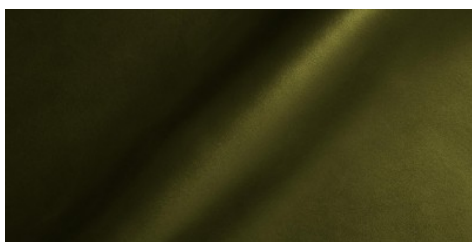
COGNAC



NERO



ROSSO



VERDE

DISCLAIMER: I colori delle immagini di questo catalogo possono differire dalla resa su pelle. The colours of the images of this catalogue may differ from the way they appear on the leather.