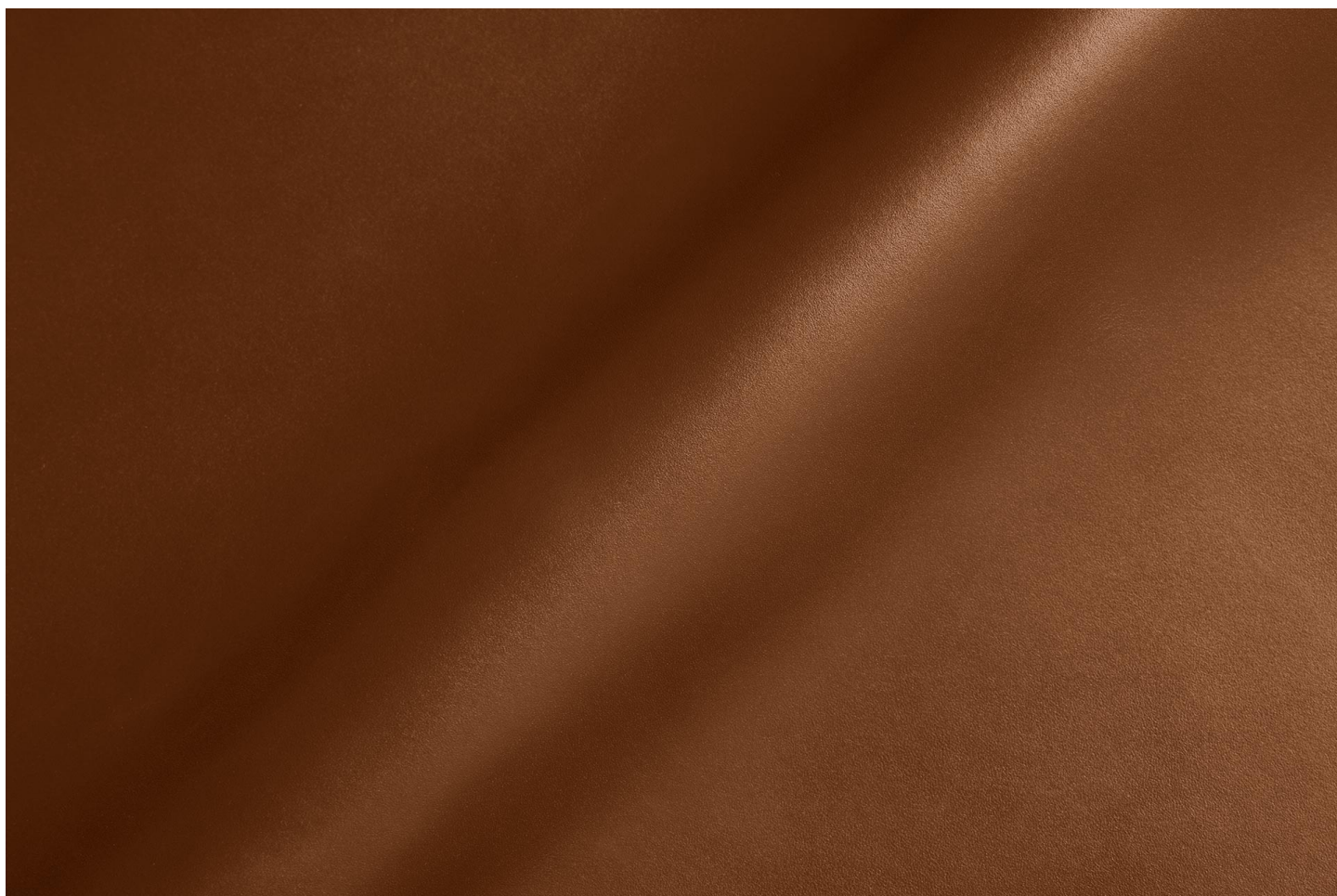




Pelletteria - Calzatura / Siena Lux



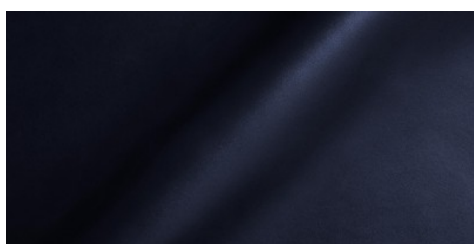
Conciatura completamente al vegetale, rifinitura con olio e anilina

PELLAME
Mezzo Vitello

SPESSORE
1.9-2.0

APPLICAZIONI
Calzatura
Pelletteria

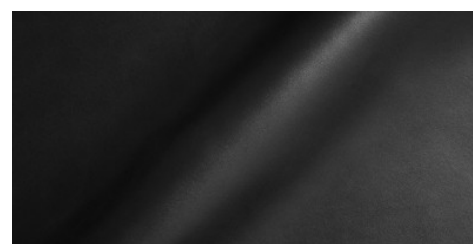
COLORI



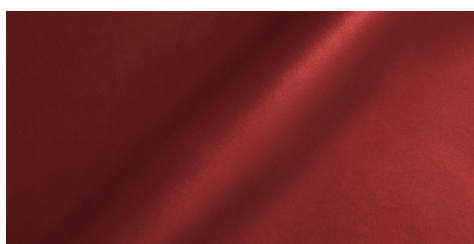
BLU



COGNAC



NERO



ROSSO



VERDE

DISCLAIMER: I colori delle immagini di questo catalogo possono differire dalla resa su pelle. The colours of the images of this catalogue may differ from the way they appear on the leather.