



## Pelletteria - Borse - Biodegradable leather / Gaiole Siena



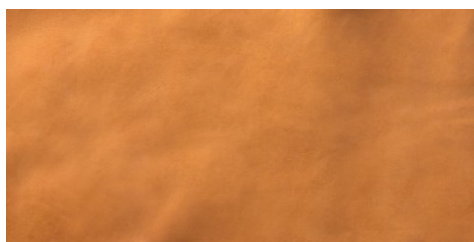
Conciatura completamente al vegetale, rifinitura con olio e anilina. SIENA è un articolo in pelle biodegradabile sviluppato con il processo di concia GAIOLE certificato Biodegradable Leather in ACQUA e COMPOST.

**PELLAME**  
Mezzo Vitello

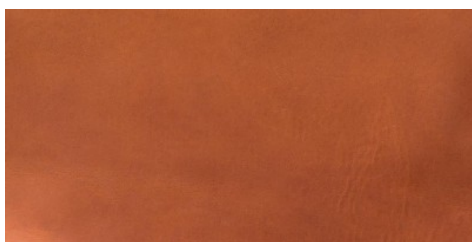
**SPESSORE**  
1.2-2.5

**APPLICAZIONI**  
Pelletteria

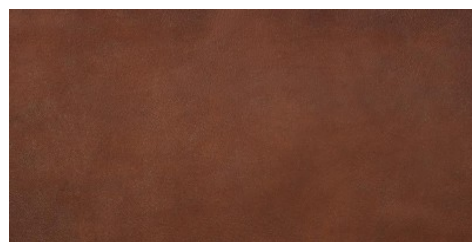
### COLORI



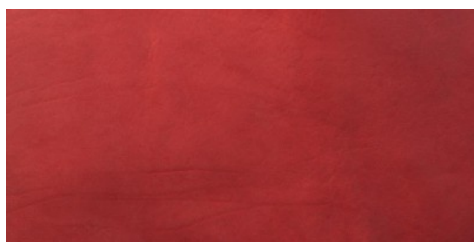
101



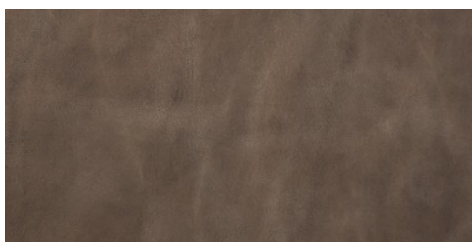
103



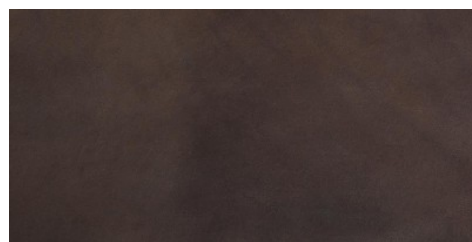
102



105



108

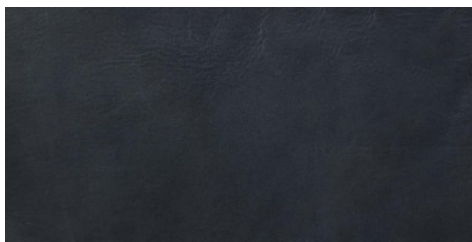


106

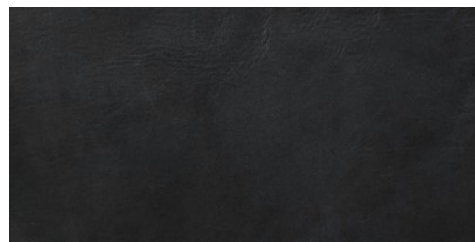
DISCLAIMER: I colori delle immagini di questo catalogo possono differire dalla resa su pelle. The colours of the images of this catalogue may differ from the way they appear on the leather.



LUX 103



104



107