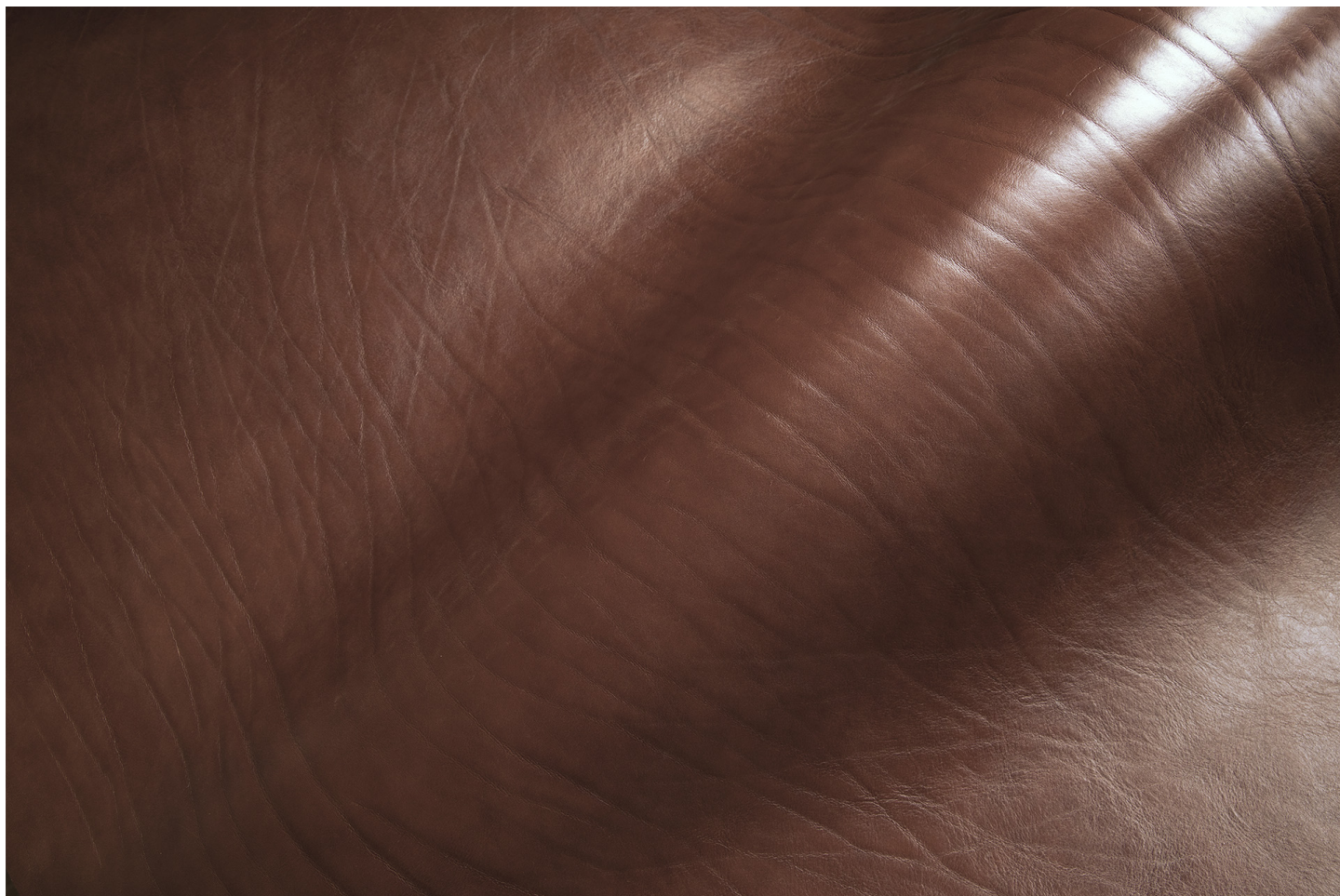




## Pelletteria - Cinture / Glacier



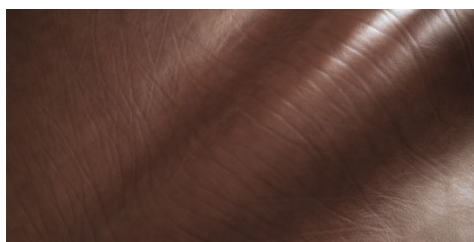
Conciatura completamente al vegetale, biodegradabile, volanato, rifinitura semianilina

**PELLAME**  
Spalla

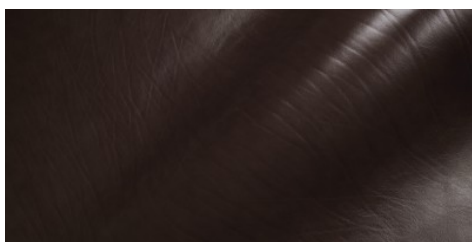
**SPESSORE**  
3.8-4.2

**APPLICAZIONI**  
Cinture  
Pelletteria

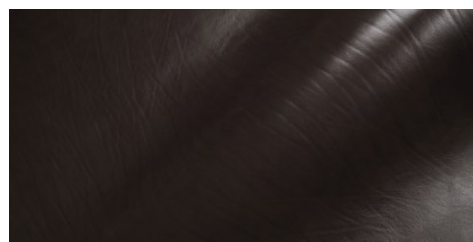
### COLORI



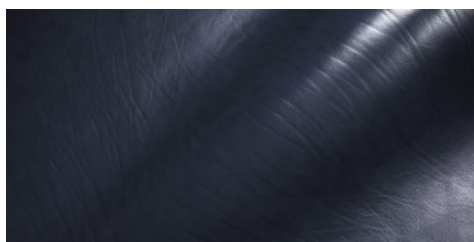
COGNAC



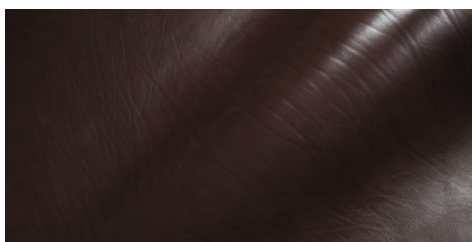
TESTA DI MORO



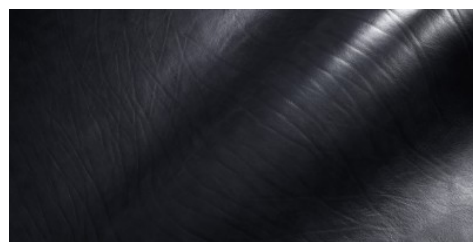
CAFFÈ



BLUE

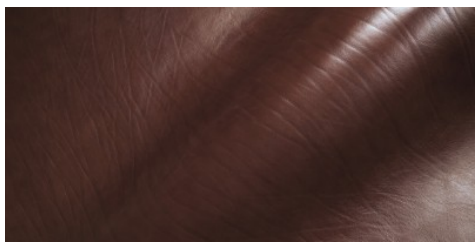


CASTAGNA



NERO

DISCLAIMER: I colori delle immagini di questo catalogo possono differire dalla resa su pelle. The colours of the images of this catalogue may differ from the way they appear on the leather.



TOBACCO